

## Economic Indicators FY-20

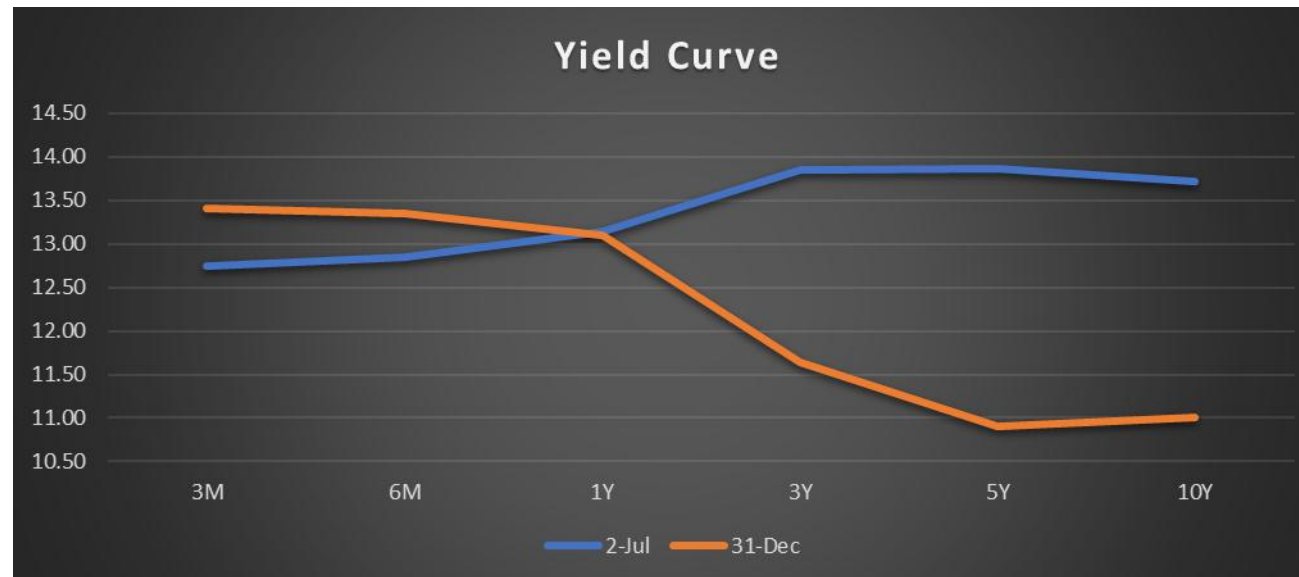
	July	August	September	October	November	December
Current Account	(678.00)	(611.00)	(284.00)	70.00	(364.00)	(367.00)
Remittance	2,039.30	1,690.87	1,747.95	2,000.80	1,819.66	2,097.23
Balance of Trade	(1,968.00)	(1,630.00)	(1,450.00)	(1,443.00)	(1,574.00)	(1,753.00)
Exports	2,217.00	1,889.00	1,879.00	2,189.00	2,109.00	2,108.00
Imports	4,185.00	3,519.00	3,329.00	3,632.00	3,683.00	3,861.00
CPI (Base 2015-16)	8.40%	10.50%	11.40%	11.04%	12.67%	12.63%
CPI (Base 2007-08)	10.30%	11.60%	12.60%	11.10%	12.30%	12.40%
Central Government Debt <sup>1</sup>	32,798.18	32,240.25	33,247.86	32,197.00	32,130.63	-
Foreign Investment	105.00	164.30	620.80	215.80	904.10	(198.30)
Foreign Exchange Reserves	15,143.80	15,644.00	15,288.30	15,423.80	16,003.40	17,930.00
Exchange Rate <sup>2</sup>	159.60	156.86	156.36	155.67	155.24	154.85
KSE 100 Index <sup>2</sup>	31,938.48	29,672.12	32,078.85	34,203.68	39,287.65	40,735.08

Amount in million dollars (except CGD<sup>1</sup>)

1- Amount in billion rupees

2- Data collected on last working day for the corresponding month

Source: SBP, PSX and PBS



\* Data collected from July 2nd and October 31st from MUFAP Daily PKRV.